



simpli**phi**  
POWER

Power. On Your Terms.™

# LITHIUM ION BATTERY ENERGY STORAGE

LITHIUM ION BATTERY INNOVATION: HOW COBALT-FREE CHEMISTRY INCREASES THE SAFETY,  
RELIABILITY & LIFECYCLE OF ENERGY STORAGE

February 2018



# ABOUT SIMPLIPI POWER



## COMPANY OVERVIEW

<b>Established</b>	Founded 2010, Re-Brand & Delaware Incorporation in 2015
<b>Business</b>	Design and Manufacture Integrated Energy Storage Solutions
<b>Investors</b>	Privately Funded. <\$3M injected to date
<b>Facilities</b>	<ul style="list-style-type: none"> <li>• Current: Headquarters &amp; Manufacturing – Ojai, CA</li> <li>• 2018: Expand Headquarters &amp; Advanced R&amp;D Facility</li> <li>• Future: Regionalized High Volume Manufacturing Centers Domestic &amp; International</li> </ul>
<b>Installed Base &amp; Customers</b>	<ul style="list-style-type: none"> <li>• ~30 MWh of Products Shipped to Date</li> <li>• &gt;250 Customers across Commercial &amp; Industrial, Residential, and Portable On &amp; Off Grid Power &amp; Security Markets Globally</li> </ul>
<b>Financials</b>	Doubling YOY since 2010; Tripled in 2017; ~40% GM
<b>Certification &amp; Recognition</b>	<ul style="list-style-type: none"> <li>• UL/CE Listed Components; UN/DOT &amp; ROHS Compliant</li> <li>• ‘Safe for Use’ – U.S. Army Aberdeen Proving Grounds</li> <li>• FAA/USDOT – Special Permission for Air Transport</li> <li>• California Center for Sustainable Energy (CCSE)</li> <li>• U.S. Green Building Council (USGBC)</li> <li>• FEMA – First Responder Database</li> <li>• UL Cert: PHI 3.4 kWh 24/48V</li> </ul>



Lee Iacocca E-Bike



Ojai, CA Headquarters

## CUSTOMER SEGMENTATION

### Installers



### OEMs



### Distributors



### Developers



## ABOUT SIMPLI PHI

SimpliPhi is dedicated to  
offering  
the **safest**  
the most **efficient**  
and the **simplest**  
way to use energy storage

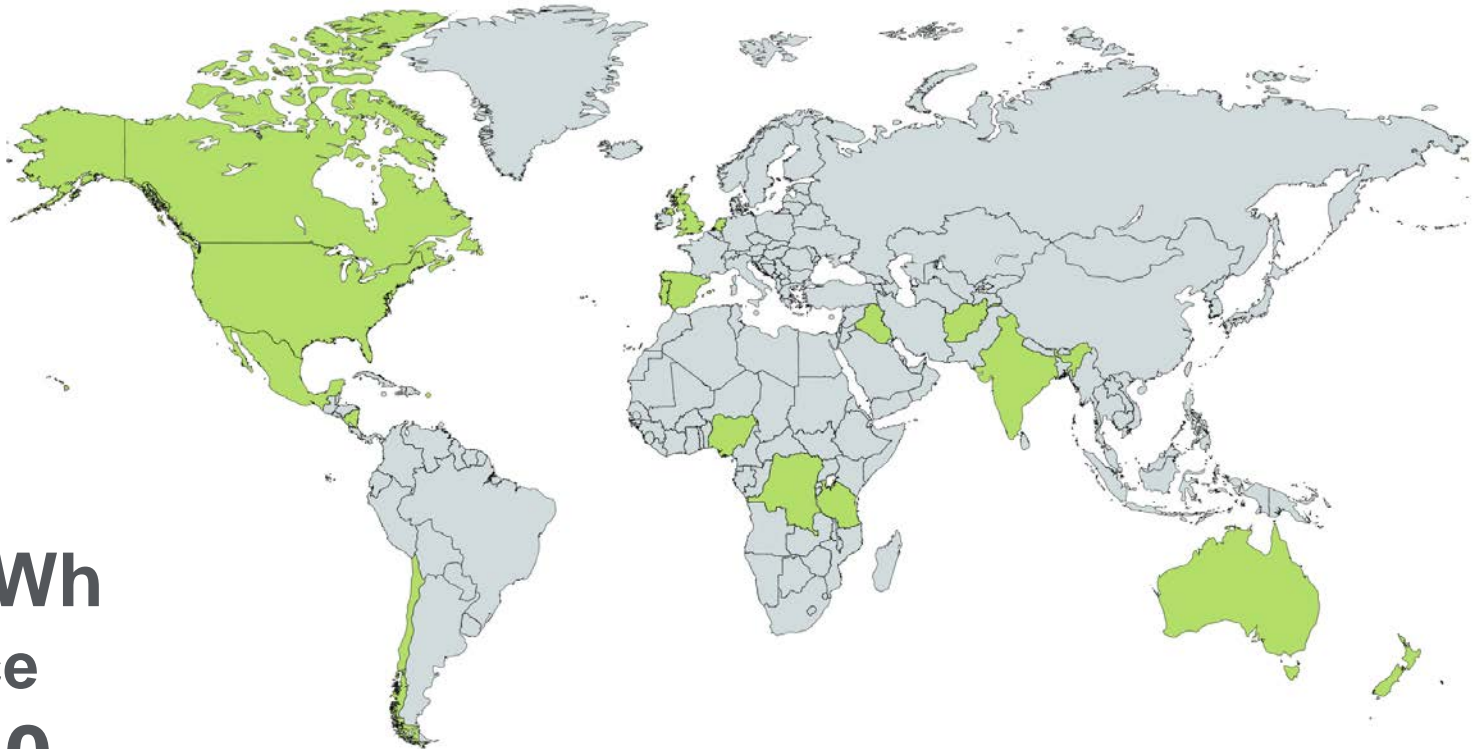


## ABOUT SIMPLIPHI

**SimpliPhi optimizes**  
**Any** power  
**generation source**  
**On** or **Off-grid**



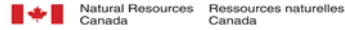
## GLOBAL SCALE: DEPLOYED IN 23+ COUNTRIES



**30 MWh**  
since  
**2010**



## COMMERCIAL & INDUSTRIAL



## RESIDENTIAL



## EMERGENCY RESPONSE

## OFF GRID POWER & SECURITY

# PRODUCT LINE OVERVIEW



## ABOUT SIMPLIPHI



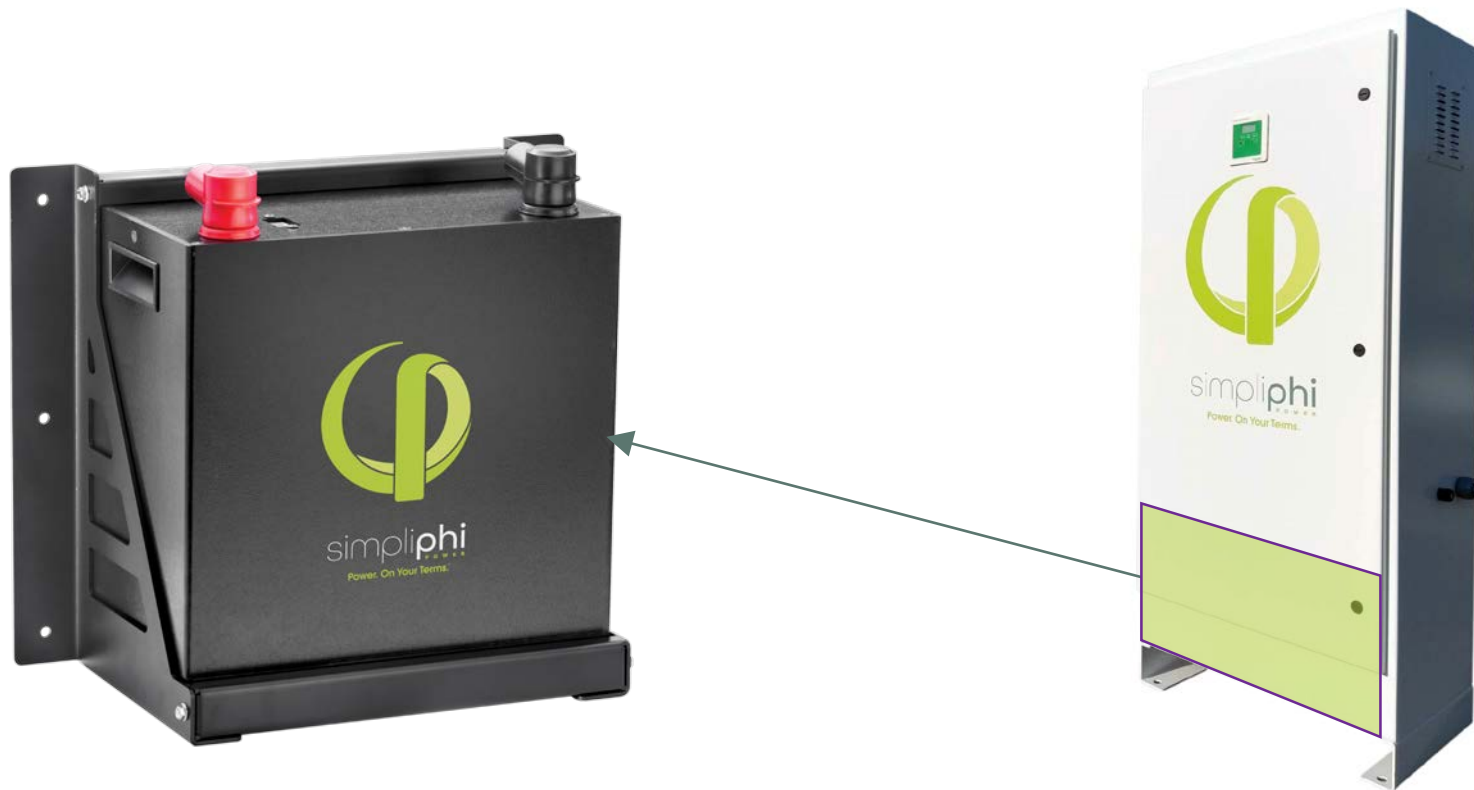
## PRODUCT LINE OVERVIEW

**PHI 3.4**

**PHI 2.6**



## AccESS



## ABOUT THE AccESS

- Plug & Play
- Outback Inside
- DC or AC Couple
  - New or Existing PV
- NEMA-3R – Outdoor ready
- No Maintenance
- Top of the line safety



# DEPLOYMENTS



## CA: RESIDENTIAL – OFF-GRID CAR CHARGING & DISASTER RELIEF





## CA: RESIDENTIAL – OFF-GRID

# The governor who's castigating the president on climate change

58

**BILL WHITAKER CBS NEWS**

*Dec 10, 2017 7:08 PM EST*



## CA: RESIDENTIAL – MODULAR BACKUP POWER & SECURITY



## CA: RESIDENTIAL & COMMERCIAL – MOBILE HYBRID OFF GRID POWER



## CA: COMMERCIAL – MICROGRID & DISASTER RELIEF



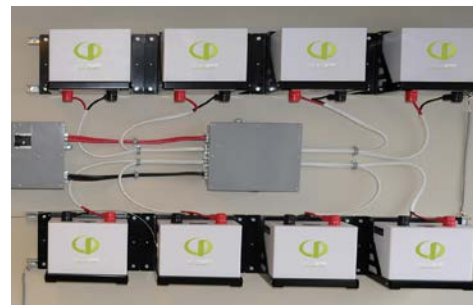
## CA: AGRICULTURAL MICROGRIDS & COST SAVINGS



## CA: COMMERCIAL – OFF GRID HYBRID POWER



Before:



After:



## CARIBBEAN: RESIDENTIAL - GRID-TIED BACKUP POWER



- Supports **essential loads for up to 16 hours** of backup power
- Can be **easily expanded** for longer durations of backup power in the future, if needed
- **10 kW** ground mount system
- Location: St. John, U.S. Virgin Islands

## HAWAII: HYBRID OFF-GRID SCHOOLS & COST SAVINGS





## AFGHANISTAN & IRAQ: DOD FORWARD OPERATING BASES



## ABOUT LFP



## TYPES OF STORAGE

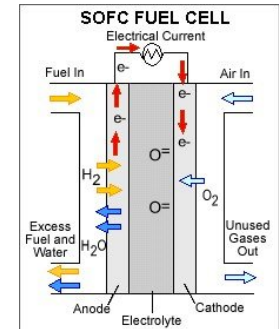
### Lead Acid



### Lithium



### Other



U.S. Department of Energy

## TYPES OF STORAGE

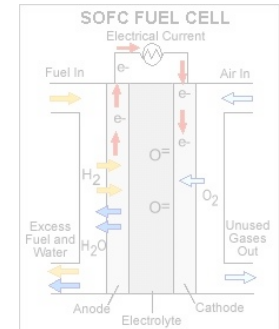
### Lead Acid



### Lithium



### Other



U.S. Department of Energy

## LITHIUM ION: CHEMISTRY & FORM FACTOR

### Chemistry

- **LCO**
  - Lithium Cobalt Oxide
- **NMC**
  - Lithium Nickel Manganese Cobalt Oxide
- **LMO**
  - Lithium Manganese Oxide
- **LFP**
  - Lithium Iron Phosphate
- **NCA**
  - Lithium Nickel Cobalt Aluminum Oxide

### Form Factor

#### Cylindrical



#### Pouch



#### Prismatic



## LITHIUM ION: CHEMISTRY & FORM FACTOR

### Chemistry

- **LCO**
  - Lithium **Cobalt** Oxide
- **NMC**
  - Lithium Nickel Manganese **Cobalt** Oxide
- **LMO**
  - Lithium Manganese Oxide
- **LFP**
  - Lithium **Iron Phosphate**
- **NCA**
  - Lithium Nickel **Cobalt** Aluminum Oxide

### Form Factor

#### Cylindrical



#### Pouch

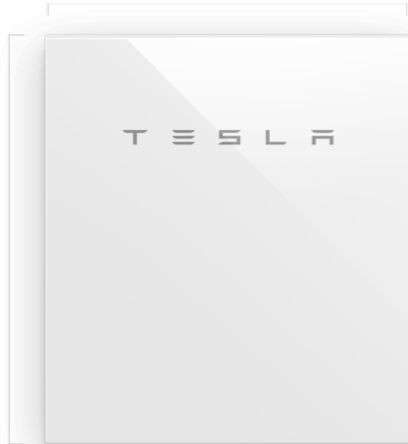


#### Prismatic



## COBALT BATTERIES

- Thermal Runaway
- Decreased Lifecycle
- Narrow Temperature Window
- Toxic
- Inefficiencies

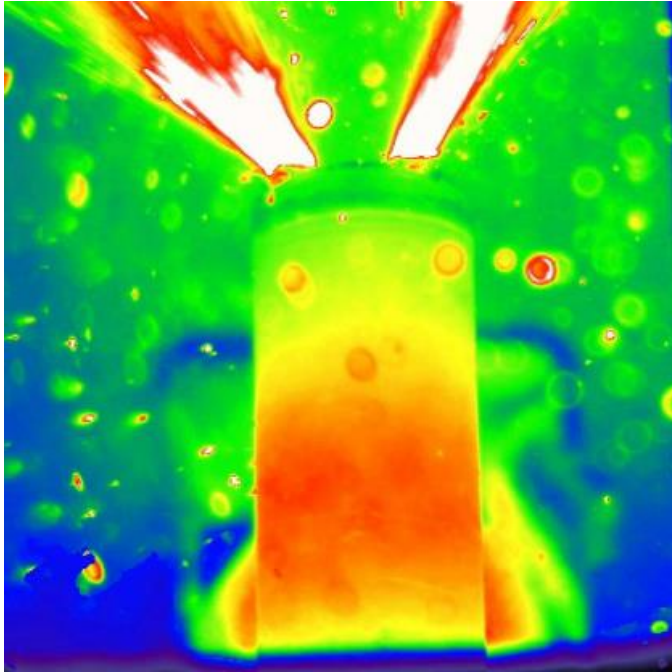


## ABOUT LFP

- Lithium Iron Phosphate (LFP) addresses 4 major issues with current lithium cobalt technologies:
  1. Safety
  2. Lifecycle
  3. Temperature
  4. Environmental Impact



## COBALT: THERMAL RUNAWAY

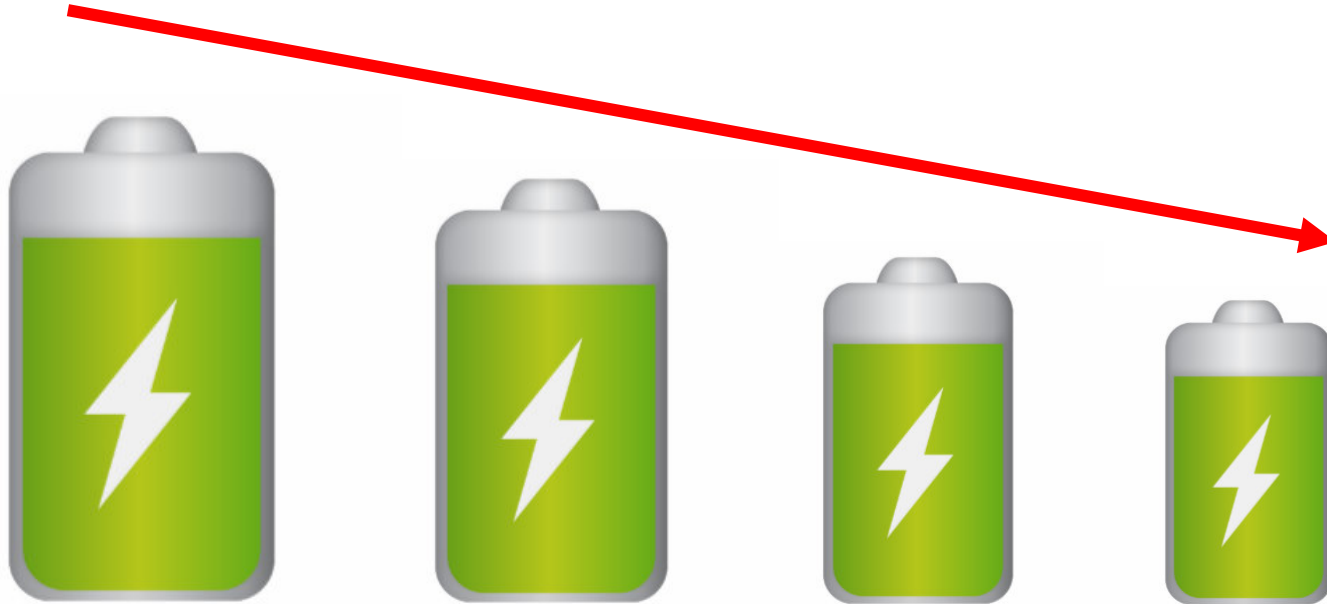


NCA Chemistry  
(Cobalt)



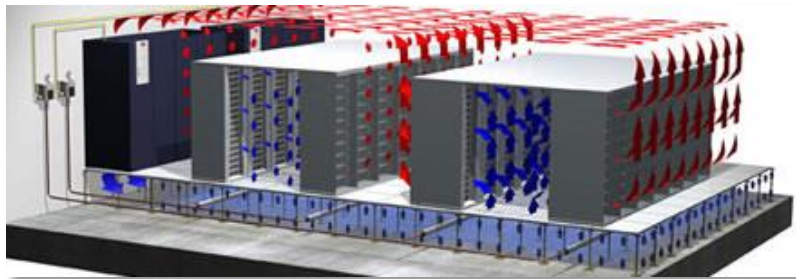
Boeing Dreamliner  
(Cobalt)

## COBALT: REDUCED LIFECYCLE

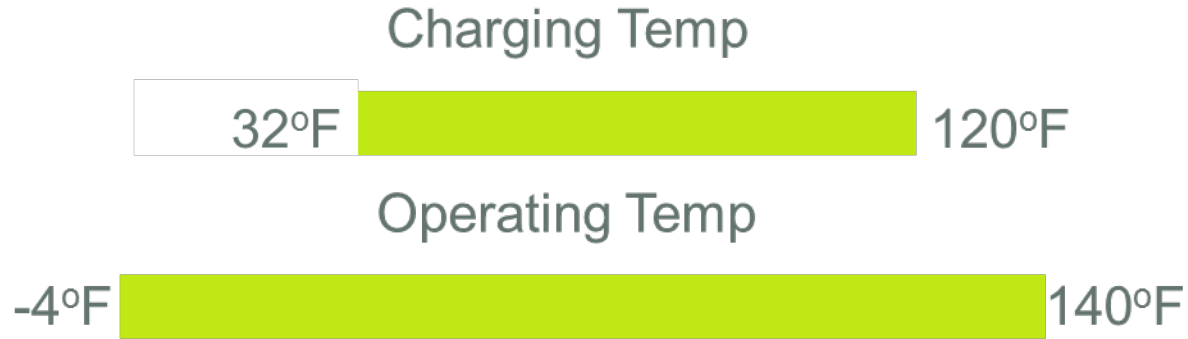


## COBALT: NARROW TEMPERATURE WINDOW

**23 to 104 F**



## LFP: WIDE TEMPERATURE WINDOW



No need for:

- Coolant
- HVAC
- Ventilation

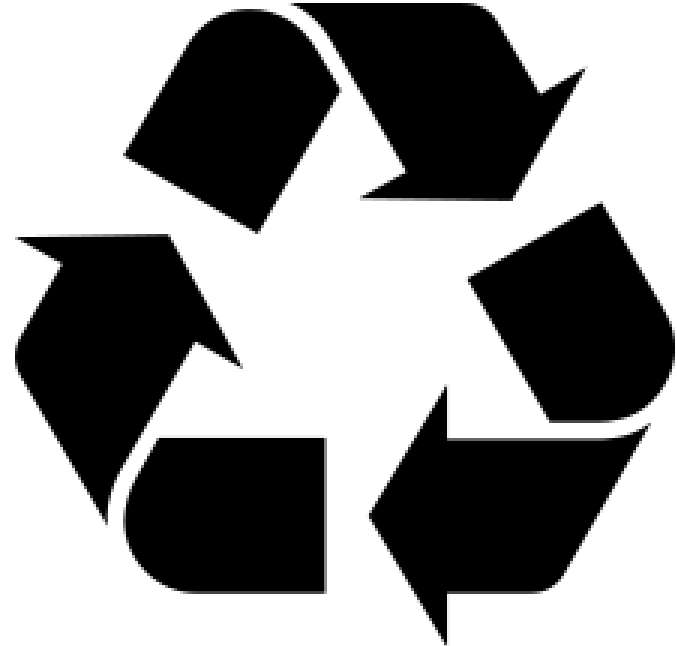
## COBALT: ENVIRONMENTAL IMPACT



## LFP: ENVIRONMENTAL IMPACT

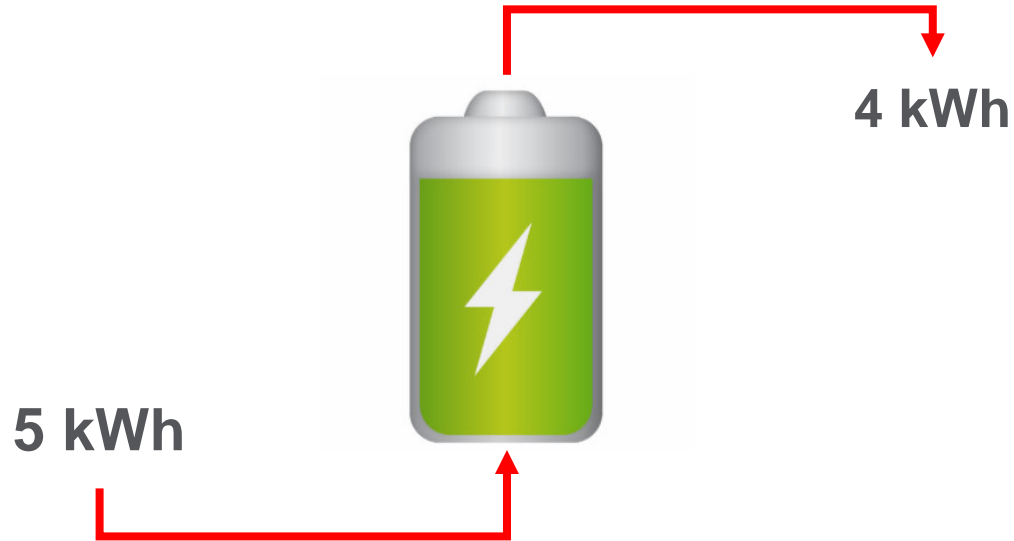


No fumes



Recyclable

## COBALT: INEFFICIENT



**= 80% Round-trip Efficiency**

## WARRANTY



90% DoD  
10 Years  
5,000 Cycles

80% EOL



80% DoD  
10 Years  
10,000 Cycles



# LEVELIZED COST OF ENERGY



## LEVELIZED COST OF ENERGY

What's the cost of every kWh I can get out of this system?

## LEVELIZED COST OF ENERGY

What's the cost of every kWh I can get out of this system?

$$\left( \frac{\textit{Price}}{\textit{Capacity} \times \textit{Cycles} \times \eta \times \textit{DoD}} \right) + \textit{Ancillary Costs}$$

## LEVELIZED COST OF ENERGY

What's the cost of every kWh I can get out of this system?

$$\left( \frac{\textit{Price}}{\textit{Capacity} \times \textit{Cycles} \times \eta \times \textit{DoD}} \right) + \textit{Ancillary Costs}$$

AKA Hidden Costs

- Square Footage → Installation Location
- Weight → Shipping Costs
- Forklift/Install Equipment → Rental to Site
- Maintenance → Truck Rolls
- Cooling → Additional Cost + Materials
- Ventilation/Setback Requirements → Area
- Construction Support → Weight Related
- Replacement Costs → Performance Related





the **safest**

the most **efficient**

and the **simplest**

